

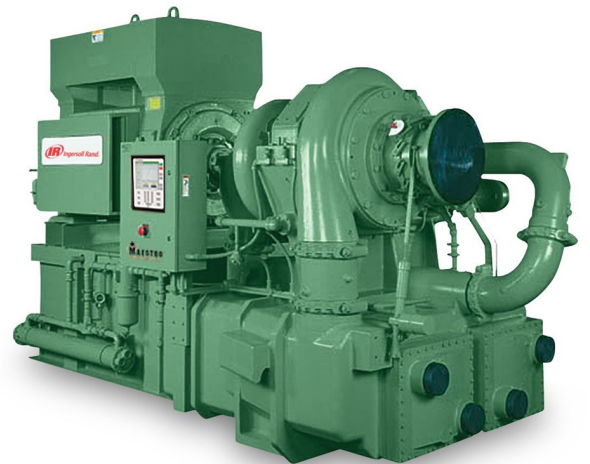
# Preventative Maintenance Program

## Minimize Unplanned Downtime

### Your Complete Centac and Cameron Joy Centrifugal Compressor Solution

#### Mechanical Performance

- Instrumentation function & calibration
- Control panel tuning
- Vibration functioning and readouts
- Lube oil system inspections and oil analysis
- Inlet air system inspection
- Seal air inspection
- Coolers/cooling water system inspection
- Condensate removal system inspection



#### Compressor Performance

- Inspect overall health of compressor with performance surge
- Establishment of benchmarks and trending



#### Optional Service Available Upon Request

- Laser alignment
- Vibration analysis

*Additional charges apply for these services*

This program offers a fixed cost preventative maintenance schedule that is designed to reduce both compressor downtime and cost of repair.

A-1 Base Service		Customer Responsibility			Air Relief Responsibility		
		Each Start	Daily	Weekly	3 Month	6 Month	Annual
Hourmeter	Check/Record	x	x	x	x	x	x
Oil Temperature	Check/Record	x	x	x	x	x	x
Casing Inlet Oil Pressure	Check/Record	x	x	x	x	x	x
Driver Lubrication (oil flooded)	Check/Record	x	x	x	x	x	x
Vibration Monitor Readings	Check/Record	x	x	x	x	x	x
Stage Air Pressure	Check/Record	x	x	x	x	x	x
Stage Air Temperature	Check/Record	x	x	x	x	x	x
Test Indicator/Warning Lights	Check/Advise	x	x	x	x	x	x
Inlet Air Temperature	Check/Record	x	x	x	x	x	x
Coolant Temperature: Inlet/Discharge	Check/Record	x	x	x	x	x	x
Inlet Air Filter DP	Check/Record	x	x	x	x	x	x
Vent Intercooler/Aftercooler	Check/Advise	x	x	x	x	x	x
Condensate Traps	Inspect/Ensure proper function	x	x	x	x	x	x
Reservoir Oil Level	Check/Record/Advise	x	x	x	x	x	x
Control and Instrument Air Filter	Replace as required	x	x	x	x	x	x
Oil Filter DP	Check/Record	x	x	x	x	x	x
Inspect Prelube Pump Coupling	Replace as required						
Inspect for Oil Leaks	Check/Advise	x	x	x	x	x	x
Inspect for Coolant Leaks	Check/Advise	x	x	x	x	x	x
Control System Tuning	Check/Advise				x	x	x
Maintain Daily Log Sheets		x	x	x			
Control Valve Calibration	Check/Advise				x	x	x
Lube Oil Thermostat Valve	Check/Advise	x		x	x	x	x
Inlet Air Filter Panels and Housing	Inspect/Advise			x	x	x	x
Oil Sample Analysis	Check/Advise				x	x	x
Oil Mist Arrestor	Check/Advise	x	x	x	x	x	x
Discharge Check Valve	Check/Advise						x
Inspect Main Motor	Advise	x		x		x	x
Inlet Screens for Oil Pumps	Inspect/Advise					x	x
Vibration Monitor Calibration	Inspect/Advise					x	x
Performance Surge Test Compressor	Check/Advise				x	x	x
Detailed Inspection Report	Per Visit				x	x	x
<b>A-2 Additional Services</b>							
Change Oil Filter	As required					x	x
Clean and Regrease Motor Couplings	Inspect/Advise					x	x
Condensate Piping and Valves	Inspect/Advise	x	x	x	x	x	x
Oil Cooler Water Side Tubes	Clean/Inspect/Replace gaskets				x	x	x
Throttle Surge Test Compressor	Check/Adjust as needed				x	x	x
<b>A-3 Additional Services</b>							
Vibration Analysis (data report only)	Check/Advise				x	x	x
Motor Alignment Using Laser Equip	Check/Maintain				x	x	x
Lube Oil Sump (see *1)	Drain/Inspect/ Clean						x

- \*1: Joy TA 18/28/38/48 compressor units without sump access port cannot be inspected and cleaned without the addition of an access port.
- Air Relief’s PM programs include diagnostics and inspections. Consumables and any other required parts will be customer supplied unless requested with PM program proposal.
- Pricing is based on a one year agreement term, two visits per year.
- Any services provided outside the scope of A1 services will be included in the invoice.

